

DECEMBER 2024

CentralStar HOLSTEIN PRICE LIST

GFORCE MATING GUIDE

NMS	HHPs	DWPs	Z-Lame	Milk	Protein	Fat	CFP
Mican * 1376	Alpazo * 1484	Alpazo * 1726	Chac 110	Hayes 2429	Mican * 94	Wonderboy * 161	Wonderboy * 248
Denyme * 1367	Mican * 1462	Solas ♦ 1597	Eeyore * 109	Rimbot ♦ 2347	Dijon 91	Foonburton * 158	Foonburton * 237
Ammo * 1361	Lighthouse * 1460	Day Trip 1574	Ammo * 108	Scar ♦ 2281	Tropicana * 90	Golley * 157	Ammo * 236
Alpazo * 1346	Stagger * 1447	Ammo * 1565	Boldness 107	Frontenac 2247	Wonderboy * 87	Giant * 154	Golley * 234
Kingdom * 1335	Golley * 1439	Eeyore * 1555	Moodle 107	Hoedown * 2213	Sheepster ♦ 86	Ammo * 152	Mican * 229
Day Trip 1332	Eeyore * 1438	Oh-MY ♦ 1553	Oli 107	Tusk 2188	Skeet * 85	Donald * 148	Donald * 228
Rosemary 1330	Ozark * 1437	Kingdom * 1545	Ozark * 106	Hazed 2177	Shyster 85	Alcatraz * 147	Alcatraz * 228
Tropicana * 1329	Ammo * 1436	Clearview * 1516	Frosky ♦ 106	Keanu 2137	Frontenac 84	Pbj 147	Dijon 228
Solas ♦ 1320	Tropicana * 1433	Independant * 1509	Figaro ♦ 106	East 2087	Stagger * 84	Clavicle * 145	Clavicle * 226
Donald * 1320	Denyme * 1428	Donald * 1494	Christan-PP 106	Patron 2074	Howitzer ♦ 84	Barkeep 145	Skeet * 225
SCS	PL	DPR	CE	SCR	Type	UDC	GTPI
Simply 2.42	Day Trip 7.9	Tune UP 2.2	Gossage 1.4	Diesel 4.9	Parian-P 3.59	Parian-P 3.29	Mican * 3393
Socks ♦ 2.47	Simply 7.8	Simply 1.7	Cabare * 1.5	Frysky 3.6	Lombardi 3.51	Lombardi 3.03	Ozark * 3346
Enthuse-P 2.47	Sundance ♦ 7.8	Poplar 1.6	Futurist-PP 1.5	Reaper ♦ 3.2	Hellion 3.47	Hazzle 3.01	Frankthelank * 3330
Staton ♦ 2.48	Stagger * 7.8	Oyster-P 1.6	Pancredible-P 1.5	Pbj 2.9	Acetylene-Red 3.46	Hardy 2.92	Golley * 3321
Mugwort 2.49	Stephan 7.6	Crunch-P 1.4	Oh-MY ♦ 1.5	Drydon 2.6	Hulu-RC 3.45	Hulu-RC 2.91	Eeyore * 3320
Pitchfork 2.51	Alpazo * 7.6	Sundance ♦ 1.3	Dynamite 1.6	High Oohm 2.6	Locksmith 3.44	Praspect 2.86	Clavicle * 3313
Stephan 2.52	Denyme * 7.6	Odirect ♦ 1.2	Cirrus-P ♦ 1.6	Welch 2.5	Legadairy 3.42	Capsize 2.84	Donald * 3311
Gossage 2.54	Rosemary 7.5	Transfer * 1.0	Howitzer ♦ 1.6	Logic ♦ 2.3	Klutch 3.39	Hellion 2.81	Mirko * 3310
O-Deer 2.54	Poplar 7.4	O-Deer 0.9	Independant * 1.6	Helmet 2.2	Image 3.39	Drop N Hot 2.80	Ammo * 3310
Endear 2.56	Gossage 7.3	Hobart 0.9	Simply 1.7	Cloud 2.1	Hanx-P 3.35	Jinx 2.77	Barkeep 3308

PROGENY-PROVEN MATING GUIDE

NMS	HHPs	DWPs	Z-Lame	Milk	Protein	Fat	CFP
Crusher ♦ 1196	Perpetual ♦ 1240	Milky 1350	Agassi 107	Lionel 3187	Lionel 95	Lionel 146	Lionel 241
Milky 1183	Trooper 1208	Everyhour ♦ 1306	Captivating 106	Alphabet 2771	Zz Top 84	Crusher ♦ 144	Perpetual ♦ 218
Lionel 1150	Crusher ♦ 1204	Gordy 1279	Superb 105	Tahiti 2227	Rupert 82	Simba 139	Crusher ♦ 212
Gordy 1126	Rupert 1159	Crusher ♦ 1247	Mashak ♦ 104	Rupert 2174	Perpetual ♦ 80	Perpetual ♦ 138	Milky 205
Simba 1124	Taos 1159	Mashak ♦ 1185	Knockout 104	Zz Top 2092	Taos 80	Milky 127	Rupert 201
Tahiti 1109	Milky 1136	Perpetual ♦ 1174	Frost Bite ♦ 103	Mashak ♦ 2071	Milky 78	Trooper 120	Simba 198
Perpetual ♦ 1100	Parfect ♦ 1130	Lionel 1107	Handy-Red 102	Everyhour ♦ 2034	Tahiti 77	Rupert 119	Trooper 197
Everyhour ♦ 1100	Lionel 1125	Rupert 1093	Luster-P 102	Perpetual ♦ 1976	Trooper 77	Rozline ♦ 118	Tahiti 183
Frost Bite ♦ 1074	Gordy 1120	Simba 1093	Gordy 101	Moonshiner ♦ 1934	Parsly 76	Conway ♦ 116	Conway ♦ 177
Mashak ♦ 1065	Zz Top 1112	Frost Bite ♦ 1081	Halo-PP 101	Taos 1908	Alphabet 71	Gordy 110	Alphabet 177
SCS	PL	DPR	CE	SCR	Type	UDC	GTPI
Trumpet-Red 2.49	Frost Bite ♦ 6.5	Agassi 2.1	Handy-Red 1.2	Simba 2.4	Hancock 3.56	Hancock 3.34	Trooper 3196
Everyhour ♦ 2.55	Huck ♦ 6.0	Moonraker 2.0	Trumpet-Red 1.5	Crusher ♦ 2.3	Hanans 3.56	Hanans 2.54	Lionel 3108
Perpetual ♦ 2.62	Beethoven ♦ 5.8	Taos 1.8	Frost Bite ♦ 1.5	Hancock 1.9	Doc 3.04	Rompen-Red 2.29	Crusher ♦ 3106
Superb 2.66	Knockout 5.7	Sertoli 1.2	Moonshiner ♦ 1.6	Handy-Red 1.8	Cadillac 2.61	Halo-PP 2.19	Perpetual ♦ 3083
Halo-PP 2.67	Gordy 5.3	High Demand 1.1	Rompen-Red 1.7	Gordy 1.8	Luster-P 2.54	Cadillac 2.18	Rupert 3081
Beethoven ♦ 2.68	Mashak ♦ 5.3	Banjo-P 1.0	Tahiti 1.7	Banjo-P 1.6	Parfect ♦ 2.37	Parfect ♦ 2.13	Milky 3069
Huck ♦ 2.71	Trumpet-Red 5.2	Trumpet-Red 0.8	Mashak ♦ 1.8	Cadillac 1.5	Rompen-Red 2.29	Mashak ♦ 2.12	Parfect ♦ 3064
Rozline ♦ 2.73	Taos 5.1	Rupert 0.6	Boeing-P-Red 1.8	Mashak ♦ 1.4	Moonraker 2.08	Luster-P 2.05	Simba 3055
Sertoli 2.73	Moonraker 5.0	Superb 0.5	Agassi 1.9	Beethoven ♦ 1.4	Conway ♦ 1.91	Doc 2.02	Taos 3055
Hanans 2.73	Superb 4.9	Renegade ♦ 0.5	Gordy 1.9	Captivating 1.3	Trooper 1.87	Superb 1.98	Superb 3036





Herd Health Profit Dollars™

to create healthy, longer-living cattle

GForce (Genomic Young Sires)

Sire Code/Name	HHP\$	NM\$	CFP	Mast	PL	DPR
14H017371 Alpazo*	1484	1346	203	5.5	7.6	-0.6
7H017191 Mican*	1462	1376	229	2.5	6.9	-0.6
7H017514 Lighthouse*	1460	1265	220	3.9	6.5	-1.2
7H017142 Stagger*	1447	1278	193	4.2	7.8	0.7
7H017200 Golley*	1439	1227	234	3.4	5.0	-1.2
250H017404 Eeyore*	1438	1285	216	3.6	6.5	-0.5
14H017393 Ozark*	1437	1295	211	4.0	6.6	0.2
14H017426 Ammo*	1436	1361	236	3.1	6.1	-1.8
14H017179 Tropicana*	1433	1329	213	3.9	6.9	-0.9
7H017411 Denyme*	1428	1367	199	4.3	7.6	-0.7
250H017387 Poplar	1426	1183	186	5.0	7.4	1.6
14H017156 Pitchfork	1415	1181	199	4.3	6.6	-0.4
7H016276 Sheepster♦	1412	1204	225	3.0	5.7	-1.2
14H017012 Clearview*	1406	1301	214	4.1	5.9	-1.3
7H017388 Browtine*	1401	1235	203	4.4	5.9	-0.4
7H017378 Assist	1399	1205	221	3.9	5.7	-2.0
7H017194 Donald*	1388	1320	228	2.6	6.0	-1.7
14H017216 Day Trip	1387	1332	208	3.1	7.9	-0.3
250H017417 Saloon	1385	1278	212	3.2	6.8	-0.7
7H017383 Skeet*	1382	1282	225	2.5	5.9	-1.8
7H017413 Foonburton*	1382	1295	237	2.3	5.5	-1.7
7H017385 Greatgully	1380	1191	207	3.6	6.0	-0.7
14H016673 Enderar	1380	1256	211	3.2	5.5	-1.5
14H017263 Kingdom*	1378	1335	200	3.2	6.8	-0.2
7H017193 Aille♦	1373	1267	203	3.3	6.5	-0.8
7H017436 Mirko*	1371	1252	216	3.2	5.6	0.3
7H017069 Atoz	1369	1250	207	4.6	6.3	-1.5
7H017220 Rosemary	1369	1330	198	2.2	7.5	0.3
7H016735 Karl*	1365	1263	203	2.9	6.5	0.2
7H017313 Mugwort	1364	1230	202	4.3	6.1	-0.6
7H017406 Flabbergast*	1364	1251	199	3.6	6.9	0.1
14H017205 Gossage	1364	1203	183	5.6	7.3	-0.8
7H017434 Patron	1362	1314	220	2.5	6.1	-1.5
7H017161 Moodle	1361	1240	191	4.2	6.5	-0.6
7H017256 Frontenac	1360	1200	217	3.4	5.1	-1.8
585H017180 Simply	1357	1219	162	5.2	7.8	1.7
7H017095 Jackhammer♦	1354	1262	219	3.5	4.8	-1.8
250H017390 Rowland*	1354	1275	192	4.0	6.7	0.3
7H017273 Marlon	1353	1180	200	3.7	6.4	-1.4
14H017533 Azul-P*	1349	1158	194	4.5	5.9	0.6

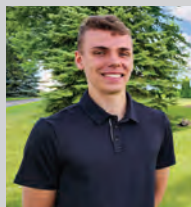
Proven Sires

Sire Code/Name	HHP\$	NM\$	CFP	Mast	PL	DPR
7H015245 Perpetual♦	1240	1100	218	2.4	4.0	-2.9
14H015179 Trooper	1208	1004	197	1.5	4.1	0.4
7H015465 Crusher♦	1204	1196	212	1.7	4.9	-1.2
7H014985 Rupert	1159	1033	201	0.4	3.4	0.6
7H015112 Taos	1159	886	161	1.0	5.1	1.8
7H015233 Milky	1136	1183	205	1.1	4.3	-3.0
7H015085 Perfect♦	1130	824	167	3.9	3.3	-1.1
7H014454 Lionel	1125	1150	241	-1.2	2.4	-4.4
14H015301 Gordy	1120	1126	174	2.4	5.3	-1.0

♦ NxGEN alumni, *NxGEN, •Early Onset Muscle Weakness (MW) Syndrome Heterozygous Carrier

Driving **HERD SUCCESS** through the female side

Brandon Biese, CentralStar Area Sales Manager, northeastern Wisconsin



For nearly six decades, Select Sires has led the industry in providing customer-satisfaction sires for our dairy producers. While our brand and elite genetics may have become synonymous, we're currently entering an era of dominance unlike that I've ever witnessed, much to thanks of our NxGEN® program.

Sires may be our game, but to our customers, their females are the MVPs. As an on-farm consultant, I've developed a habit of printing Holstein USA's "High Ranking GTPI® Young Females" list on a monthly basis, highlighting the heifers sired by our bulls, and hanging it in my truck for customers to see. Lately, the entire list glows in yellow highlighter.

While Select Sires brands have routinely sired over half of the heifer calves on the list, this past November, we set a record siring 157 of the top 200 GTPI heifers in the U.S. Of those 43 calves not directly sired by a bull from our program, every single calf had a Select Sires bull in their immediate pedigree, many of which are granddaughters of a bull from our lineup. Of those sired by our bulls, a vast majority come directly out of NxGEN sires. In fact, this past August, popular NxGEN sire 7H016276 SHEEPSTER sired nearly half the list, himself!

While historically this level of influence may have been chalked up to chance, that is certainly not the case today. The NxGEN program has allowed our sire department and customers exclusive access to the industry's best sires, who continue to turn out high-testing females for our customers.

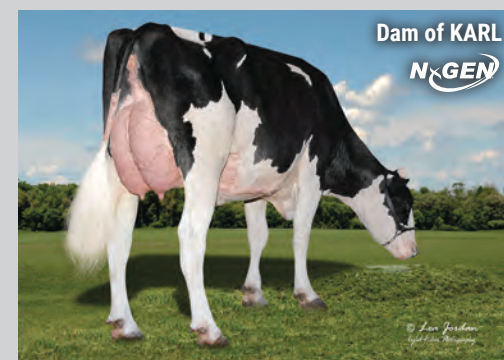
Moving forward, I expect NxGEN sires such as 7H016276 SHEEPSTER, 7H016485 SUNDANCE, 250H016741 HARDIN, 7H016735 KARL, and numerous others to continue to dominate the heifer charts moving into 2025.

The takeaway? It's not just about using the top bulls, it's about their ability to transmit to their daughters, and the real game-changers are the NxGEN sires. These females are proof of the genetic impact NxGEN delivers, driving tangible improvements. By joining NxGEN, producers can see real, measurable benefits in the females who make up their herds.



Get access now

Apply now to become part of this exclusive membership program.





A NEW ERA IN ROI

CAPTURE GENETIC TRENDS
like never before!



Scan the
QR code
for details.

7H017514
LIGHTHOUSE

© Jimmy Thomas
All rights reserved

Join NxGEN® for access to Select Sires' most elite genetics. Talk with your CentralStar team to create a genetic strategy that will accelerate genetic progress while maximizing your herd's performance and profitability! Membership is required to purchase NxGEN sires. Semen is direct-shipped to your farm.

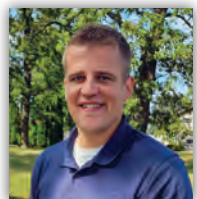
Sire	NM\$	CFP	DWP\$*	HHP\$*	GTPI*
7H016735 KARL HAYK x GAMEDAY x LEGACY	1263	203	1215	1365	3306
7H016935 GIANT LETCHWORTH x Deluxe x BIGGELLO	1286	220	1385	1318	3297
7H017010 HONOCO IBENDIGO x PERFECT x Rapid	1220	201	1284	1321	3258
7H017048 WONDERBOY ELVIN x GAMEDAY x Acura	1301	248	1269	1289	3263
7H017142 STAGGER HAYK x GAMEDAY x Acura	1278	193	1304	1447	3278
7H017191 MICAN SHEEPSTER x GAMEDAY x LEGACY	1376	229	1470	1462	3393
7H017194 DONALD SHEEPSTER x Engineer x LIONEL	1320	228	1494	1388	3311
7H017200 GOLLEY SHEEPSTER x Deluxe x BIGGELLO	1227	234	1383	1439	3321
7H017321 TUMERIC EASTON x PARSLY x TRY ME	1295	197	1240	1315	3281
7H017330 CLAVICLE Dominance x GAMEDAY x LEGACY	1275	226	1315	1310	3313
7H017369 FRANKTHETANK WAR GEAR x PARSLY x TRY ME	1279	202	1328	1291	3330
7H017372 ALCATRAZ SHEEPSTER x GAMEDAY x RENEGADE	1172	228	1173	1326	3289
7H017383 SKEET SHEEPSTER x Upside x LIONEL	1282	225	1469	1382	3295
7H017388 BROWTINE Perky x Rayshen x Pursuit	1235	203	1368	1401	3250
7H017406 FLABBERGAST Dominance x GAMEDAY x TAHITI	1251	199	1428	1364	3264
7H017411 DENYME EASTON x GAMEDAY x Acura	1367	199	1463	1428	3289
7H017413 FOONBURTON SHEEPSTER x GAMEDAY x LEGACY	1295	237	1294	1382	3301
7H017436 MIRKO ELVIN x PAYLOAD x RENEGADE	1252	216	1335	1371	3310
7H017514 LIGHTHOUSE SHEEPSTER x Lightner x Acura	1265	220	1286	1460	3268
7H017521 CROSBIE WAR GEAR x PERFECT x RIVETING	1151	196	1227	1312	3274
9H016849 ICE CUBE-S FROST BITE x PERFECT x Lone Ranger	1053	174	1080	1091	3068

Sire	NM\$	CFP	DWP\$*	HHP\$*	GTPI*
14H017012 CLEARVIEW KAHN x PERFECT x Rapid	1301	214	1516	1406	3241
14H017023 FOUGHTY ELVIN x PARSLY x TRY ME	1248	198	1357	1316	3224
14H017124 HEIMRIX ESQUIRE x CONWAY x LIONEL	1142	187	1165	1298	3197
14H017179 TROPICANA HAYK x CRUSHER x EISAKU	1329	213	1469	1433	3169
14H017204 TWISTED-P SHEEPSTER x BEDROCK-PP x BIGGELLO	1185	200	1267	1346	3204
14H017260 HOEDOWN VAN GOGH x GAMEDAY x BIGGELLO	1304	206	1412	1315	3236
14H017263 KINGDOM KAHN x PAYLOAD x TAHITI	1335	200	1545	1378	3285
14H017371 ALPAZO SHEEPSTER x GAMEDAY x Therisk	1346	203	1726	1484	3266
14H017393 OZARK SHEEPSTER x GAMEDAY x Pursuit	1295	211	1446	1437	3346
14H017426 AMMO SHEEPSTER x GAMEDAY x ARROWHEAD	1361	236	1565	1436	3310
14H017533 AZUL-P SHEEPSTER x Monument-P x RENEGADE	1158	194	1338	1349	3178
14H017556 KOKIO LIONEL x AHEAD x Einstein	1232	207	1471	1307	3214
250H016691 TRANSFER BEETHOVEN x GAMEDAY x RENEGADE	1119	181	1229	1302	3201
250H017009 HOWLAND-P CHEW-P x AHEAD x Rapid	1172	195	1239	1261	3203
250H017075 AKSHAY-P CHEW-P x GAMEDAY x LEGACY	1068	174	1145	1112	3150
250H017271 INDEPENDANT VAN GOGH x GAMEDAY x Venture	1289	218	1509	1347	3270
250H017298 HABULOUS-P HAYK x PERFECT x LUSTER-P	1073	173	1172	1267	3201
250H017347 CABARE EASTON x Deluxe x BIGGELLO	1239	191	1300	1328	3268
250H017390 ROWLAND LETCHWORTH x GAMEDAY x EISAKU	1275	192	1417	1354	3234
250H017404 EEYORE SHEEPSTER x GAMEDAY x BIGGELLO	1285	216	1555	1438	3320



7H017514 LIGHTHOUSE

LIGHTHOUSE is a new NxGEN release that defines balance. He boasts +144 pounds of fat at over +1,500 pounds of milk. LIGHTHOUSE will create moderate framed daughters with adequate strength and openness. Combining outstanding production with his +3.7 Livability and +6.5 Productive Life will allow for daughters to be profitable and remain in your herd as long-lasting cows. His daughters will thrive in any environment.



Wes Vormastic
Director of A.I. and Herd
Management Products

Holstein GForce™ (Genomic Young Sires) December 2024



Code#	Name	\$	Sxd \$	GPA				Z-Lame	Milk	PRO	P%	FAT	F%	CFP	GPA	GPA	GPA	GPA	Beta	GPA	GPA	UDC	RLS	GTPI	Pedigree
				NM\$	HHP\$	DWP\$	Casein																		
GForce																									
7HO16179	Backfire	45	65	1052	1171	1240	103	1576	62	0.04	114	0.20	176	2.65	5.1	-1.2	1.9	A2A2	1.0	2.35	2.11	1.05	3112	Gameday x Brass	
7HO16263	Malone	60	80	1147	1217	1271	104	1369	59	0.06	112	0.22	171	2.63	6.2	-0.4	1.7	A1A2	0.0	1.59	1.86	0.10	3151	Gameday x Pursuit	
7HO16276	Sheepster ♦	70	90	1204	1412	1239	95	1645	86	0.13	139	0.28	225	2.91	5.7	-1.2	3.2	A1A2	-0.2	1.52	1.15	-0.51	3280	Trooper x Acura	
7HO16282	Mimic ♦	50	70	1137	1240	1342	105	1486	77	0.11	120	0.23	197	2.84	4.3	-0.2	2.0	A1A2	0.6	0.35	0.68	1.17	3049	Rayshen x Jared	
7HO16308	Earnest Bass	45	65	1023	1015	775	103	1691	68	0.05	101	0.13	169	2.76	5.5	-0.5	1.8	A2A2	0.3	1.42	1.31	2.22	3009	Drive x Eisaku	
7HO16427	Sabertooth	45	65	1195	1146	1147	100	1715	69	0.05	117	0.19	186	2.79	6.5	-0.9	1.8	A2A2	0.2	0.72	0.76	1.16	3058	Drive x Acura	
7HO16485	Sundance ♦	50	70	1177	1264	1234	101	875	52	0.09	104	0.27	156	2.59	7.8	1.3	2.3	A1A2	-2.1	1.65	2.08	0.06	3190	Earlybird x Try Me	
7HO16520	Pbj	60	80	1076	1267	1440	101	1188	66	0.11	147	0.38	213	2.70	3.3	-2.4	2.1	A1A1	2.9	1.96	2.19	0.89	3197	Gameday x Renegade	
7HO16527	Howitzer ♦	55	75	1259	1218	1218	98	1851	84	0.09	116	0.16	200	2.80	6.7	-0.7	1.6	A2A2	0.5	0.80	1.55	-0.21	3196	Huck x Acura	
7HO16570	Reaper ♦	45	65	1081	1184	1077	93	1691	76	0.08	112	0.17	188	2.69	4.8	-1.3	1.9	A2A2	3.2	1.78	1.76	0.48	3126	Jalapeno x Perfect	
7HO16644	Rimbot ♦	50	70	1210	1305	1349	104	2347	77	0.01	110	0.07	187	2.63	6.1	-2.1	1.9	A2A2	-0.8	1.40	1.50	1.49	3138	Rix x Sheldon	
7HO16688	Staton ♦	40	60	1035	1167	944	97	975	56	0.10	117	0.30	173	2.48	5.2	-0.3	2.5	A1A2	-1.4	1.85	2.11	-0.55	3123	Overdo x Manhattan	
7HO16699	Honda	50	70	1160	1199	1241	91	1781	70	0.05	115	0.17	185	2.87	5.2	-0.1	1.9	A2A2		0.85	1.48	-0.74	3104	Magnum x Rashan	
7HO16743	Huggy	55	75	1071	1184	1100	88	1783	67	0.04	93	0.09	160	2.63	6.6	-0.1	1.8	A2A2	1.9	1.67	1.38	1.00	3074	Hayk x Espionage	
7HO16763	Keanu	55	75	1168	1290	1288	95	2137	83	0.06	104	0.08	187	2.65	6.4	-0.8	2.2	A2A2	0.3	1.72	1.47	0.96	3190	Hayk x Gameday	
7HO16769	Welch	45	65	1040	1149	1060	93	1142	58	0.08	111	0.25	169	2.61	5.3	-0.9	1.8	A1A2	2.5	1.00	1.89	0.01	3057	Overdo x Perfect	
7HO16806	Carter ♦	50	70	1133	1158	1095	101	1903	76	0.06	96	0.08	172	2.78	6.4	-0.8	2.1	A1A2		1.55	1.74	1.45	3097	Frost Bite x Moonshiner	
7HO16835	Logic ♦	45	65	1150	1199	1202	102	1378	70	0.10	104	0.19	174	2.75	6.7	0.3	2.1	A2A2	2.3	0.99	1.08	0.93	3108	Frost Bite x Taos	
7HO16916	Stephan	55		1218	1338	1319	103	1337	68	0.10	102	0.19	170	2.52	7.6	0.2	2.3	A1A2		0.98	1.88	-0.39	3177	George Miller x Gameday	
7HO16932	Proven Full	55	75	1191	1309	1240	99	1252	69	0.11	107	0.22	176	2.62	6.8	0.2	2.1	A1A2		1.49	1.49	0.22	3178	Hayk x Gameday	
7HO16960	Deeprun	40	60	1117	1100	1233	99	1531	63	0.05	130	0.26	193	2.76	5.2	-1.7	2.1	A2A2	0.7	2.07	2.19	-0.36	3157	Magnum x Gameday	
7HO16962	Oh-MY ♦	45	65	1309	1345	1553	103	2042	82	0.06	125	0.17	207	2.70	6.5	-2.7	1.5	A1A2		1.16	1.47	1.02	3194	Frost Bite x Gameday	
7HO16966	Sanborn	60	80	1151	1326	1198	93	1563	73	0.09	121	0.23	194	2.82	6.0	0.8	2.2	A2A2	1.3	1.59	1.47	0.36	3221	Hayk x Gameday	
7HO16984	Hobart	45	65	1106	1277	1014	94	1276	64	0.09	113	0.24	177	2.59	6.2	0.9	2.1	A1A1		0.88	0.92	-0.43	3100	Hayk x Moonshiner	
7HO16990	Frosky ♦	45	65	1175	1280	1346	106	750	64	0.15	130	0.39	194	2.57	5.7	-0.8	1.9	A2A2		1.48	1.90	1.27	3199	Sear x Deluxe	
7HO16999	Handpick	50	70	1241	1299	1429	102	1670	76	0.09	133	0.25	209	2.75	5.3	-2.1	2.1	A1A2		1.87	1.67	1.05	3222	Letchworth x Gameday	
7HO17000	Haunting	40	60	1010	1133	1032	99	1243	70	0.11	102	0.20	172	2.71	5.4	-1.0	2.2	A2A2		1.67	2.13	0.54	3080	Cognac x Conway	
7HO17002	Chuck	60	80	1134	1245	1171	96	1929	80	0.07	115	0.15	195	2.63	6.0	-0.1	2.5	A2A2	-1.6	1.92	1.42	0.01	3230	Esquire x Gameday	
7HO17007	Dynamite	55	75	1161	1137	1141	105	1424	65	0.07	118	0.24	183	2.85	5.3	0.1	1.6	A1A2	1.0	2.09	1.61	2.63	3168	Letchworth x Drive	
7HO17044	Tesla ♦	35	55	1196	1109	1239	103	1479	60	0.05	106	0.18	166	2.80	6.8	0.4	1.7	A2A2		1.31	1.75	0.06	3135	Frost Bite x Gameday	
7HO17061	Over Wall ♦	45	65	1066	1199	1080	99	1000	64	0.12	108	0.26	172	2.77	5.8	-0.8	2.3	A1A2		1.76	2.10	0.63	3108	Holysmokes x Conway	
7HO17069	Atoz	65	85	1250	1369	1465	103	1230	74	0.13	133	0.32	207	2.62	6.3	-1.5	2.0	A1A2		1.59	1.31	0.71	3230	Powerstar x Gameday	
7HO17094	Higuera ♦	55	75	1267	1319	1293	100	1001	77	0.17	143	0.39	220	2.79	5.1	-0.5	2.5	A2A2		1.45	1.21	2.36	3250	Letchworth x Silverchair	
7HO17095	Jackhammer ♦	55	75	1262	1354	1169	98	1707	83	0.11	136	0.26	219	2.79	4.8	-1.8	2.2	A1A2		1.72	1.33	0.98	3246	Letchworth x Zazzle	
7HO17106	Hadzuki ♦	45	65	1156	1272	1025	90	1434	80	0.13	125	0.26	205	2.78	5.1	-0.3	2.7	A1A2		1.56	1.16	0.68	3193	Hayk x Crusher	
7HO17110	Soudan	55	75	1179	1309	1163	100	888	66	0.14	126	0.35	192	2.67	5.9	-0.4	2.5	A2A2		1.56	1.76	1.32	3192	Letchworth x Crusher	
7HO17131	Hades	50	70	1128	1246	1179	98	1114	68	0.12	110	0.25	178	2.61	6.1	-0.6	2.2	A1A2		1.40	1.68	-0.17	3125	Hayk x Highjump	
7HO17132	Leonidas	55	75	1196	1275	1389	101	1423	68	0.09	137	0.31	205	2.86	4.3	-0.8	1.9	A2A2	0.7	1.46	1.19	1.50	3181	Letchworth x Deluxe	
7HO17134	Rapidash	50	70	1166	1294	1260	98	1098	61	0.10	127	0.32	188	2.62	6.1	-0.9	2.4	A2A2		1.37	1.96	-0.64	3170	Soysauce x Gameday	
7HO17159	Skydiver ♦	45	65	1107	1145	989	96	1502	67	0.07	116	0.22	183	2.67	5.1	-1.4	2.2	A2A2		1.94	1.94	2.00	3136	Chew-P x Highjump	
7HO17161	Moodle	60	80	1240	1361	1404	107	1020	62	0.11	129	0.34	191	2.73	6.5	-0.6	2.1	A1A2		1.09	1.38	1.67	3162	Letchworth x Gameday	
7HO17163	Hayes	45	65	865	1019	965	101	2429	80	0.01	75	-0.06	155	2.81	4.6	-0.9	2.2	A2A2		2.33	1.72	-0.33	3006	Esquire x Perfect	
7HO17170	Penarol	50	70	1260	1233	1247	102	1073	67	0.12	142	0.38	209	2.78	5.6	-0.5	2.1	A2A2		0.53	0.75	0.96	3146	Elvin x Rashan	
7HO17193	Aille ♦	55	75	1267	1373	1431	98	1257	73	0.12	130	0.31	203	2.69	6.5	-0.8	2.1	A2A2		0.83	0.85	1.05	3169	Elvin x Gameday	
7HO17199	Buttermaker ♦	60	80	1177	1260	1370	105	1564	70	0.08	127	0.25	197	2.61	5.6	-1.3	2.0	A2A2		1.70	2.01	1.31	3187	Frampton x Deluxe	
7HO17220	Rosemary	70	90	1330	1369	1490	104	1864	77	0.07	121	0.18	198	2.69	7.5	0.3	2.0	A2A2		1.37	1.83	-0.05	3288	Felix x Gameday	
7HO17238	Buldr	55	75	1141	1330	1145	89	1349	71	0.11	127	0.28	198	2.80	4.7	0.3	2.3	A2A2		1.86	1.55	1.45	3230	Letchworth x Zazzle	
7HO17239	Bambino	50	70	1102	1245	1132	94	1155	72	0.13	140	0.36	212	2.77	4.3	-2.1	2.3	A2A2		1.39	1.34	1.47	3139	Bambam x Perfect	
7HO17256	Frontenac	50	70	1200	1360	1433	98	2247	84	0.05	133	0.17	217	2.65	5.1	-1.8	2.4	A2A2		1.56	1.53	0.63	3228	Kahn x Perfect	
7HO17267	Gabe	50	70	1106	1319	1268	99	1550	75	0.10	128	0.25	203	2.73	4.9	-1.0	2.5	A1A2		1.48	1.61	0.90	3182	War Gear x Perfect	
7HO17273	Marlon	55	75	1180	1353	1436	101	2028	80	0.06	120	0.15	200	2.78	6.4	-1.4	2.3	A2A2		1.57	1.59	-0.02	3214	Van Gogh x Perfect	

7HO17313	Mugwort	60	80	1230	1364	1275	101	857	64	0.14	138	0.40	202	2.49	6.1	-0.6	2.5	A2A2		1.21	1.64	0.12	3226	Gameplan x Rashan
7HO17348	Chac	50	70	1048	1167	1095	110	1236	61	0.08	103	0.21	164	2.76	5.3	-0.2	1.8	A2A2		2.13	2.51	1.38	3128	Easton x Perfect
7HO17375	Odayle	55	75	1187	1225	1192	95	1425	70	0.09	110	0.21	180	2.77	5.5	0.1	1.7	A1A2		1.65	1.86	0.59	3195	Easton x Gameday
7HO17376	Tusk	55	75	1213	1201	1229	99	2188	82	0.05	99	0.05	181	2.69	5.9	-1.0	2.0	A2A2		1.55	1.60	-0.24	3143	Easton x Alphabet
7HO17378	Assist	60	80	1205	1399	1454	93	1447	79	0.12	142	0.32	221	2.82	5.7	-2.0	2.5	A1A1		2.09	1.28	0.17	3279	Sheepster x Perfect
7HO17380	Dijon	60	80	1280	1343	1195	98	2024	91	0.10	137	0.22	228	2.75	5.9	-1.6	2.3	A1A2		1.26	1.20	0.83	3264	Sheepster x Drive
7HO17385	Greatgully	60	80	1191	1380	1240	102	1332	78	0.13	129	0.29	207	2.83	6.0	-0.7	2.2	A1A2		1.42	1.69	-0.10	3236	Sheepster x Gameday
7HO17396	Lincoln	50	70	1166	1302	1297	98	1168	68	0.12	129	0.32	197	2.66	5.3	-0.5	2.1	A1A2		0.98	1.19	1.12	3135	Mimic x Gameday
7HO17399	Hafestis	50	70	1162	1222	1009	93	1185	80	0.16	144	0.37	224	2.95	4.1	-0.7	2.4	A2A2		1.45	1.37	0.36	3211	Sheepster x Highjump
7HO17418	Barkeep	70	90	1227	1299	1037	89	1595	75	0.09	145	0.31	220	2.87	5.0	-0.8	2.3	A2A2		2.08	2.15	0.81	3308	Sheepster x Gameday
7HO17424	Hazed	45	65	989	1128	989	99	2177	80	0.04	116	0.12	196	2.90	3.3	-2.3	2.3	A2A2		2.04	1.98	0.08	3116	Lionel x Perfect
7HO17434	Patron	55	75	1314	1362			2074	78	0.05	142	0.23	220	2.79	6.1	-1.5	2.4	A1A2		0.83	1.03	0.45	3233	Sheepster x Gameday
7HO17516	Shyster	55	75	1201	1288	1167	98	1583	85	0.13	140	0.29	225	2.91	4.3	-2.6	2.2	A2A2		1.47	1.31	0.49	3206	Sheepster x Lionel
7HO17537	Shimmy	60	80	1287	1298	1277	104	2028	82	0.06	109	0.11	191	2.83	6.1	-0.6	2.1	A1A2		1.77	1.97	0.85	3249	Easton x Gameday
7HO17547	Tune UP	50	70	1088	1211	1128	101	1234	63	0.09	99	0.19	162	2.91	6.1	2.2	2.1	A1A2		1.93	1.69	-0.39	3173	Tamborine x Duffy
14HO16673	Endear	60	80	1256	1380	1374	102	1304	75	0.13	136	0.32	211	2.56	5.5	-1.5	2.2	A1A2	1.0	0.80	1.15	-0.85	3178	Monteverdi x Zsberilla
14HO16706	Kersh	45	65	1047	1080	1034	101	2010	71	0.03	86	0.03	157	2.74	6.3	-1.0	2.5	A2A2		1.67	1.98	0.49	3046	Beethoven x Moonshiner
14HO16755	Socks ♦	45	65	1084	1279	1101	96	1729	74	0.07	92	0.09	166	2.47	6.9	0.1	2.7	A1A2	-0.7	0.95	1.48	-0.58	3097	George Miller x Moonshiner
14HO16827	Scar ♦	45	65	1081	1225	1141	104	2281	77	0.02	109	0.08	186	2.80	5.1	-0.7	2.0	A2A2	0.2	0.93	1.26	-0.11	3091	Frost Bite x Renegade
14HO16836	Drydon	60	80	1179	1338	1384	102	1213	73	0.13	107	0.23	180	2.67	6.7	-0.3	2.0	A2A2	2.6	1.69	1.90	0.57	3191	Hayk x Gameday
14HO16961	O-Dear	45	65	1123	1257	1157	95	1055	65	0.12	107	0.25	172	2.54	6.6	0.9	1.9	A1A2		1.19	1.32	-0.35	3153	Hayk x Gameday
14HO17026	Solas ♦	60	80	1320	1267	1597	97	1675	75	0.08	126	0.23	201	2.61	7.1	-1.9	1.9	A1A2		1.02	1.64	-0.14	3199	Van Gogh x Gameday
14HO17066	Lapeno	60	80	1287	1333	1484	102	1320	80	0.14	130	0.30	210	2.69	5.7	-0.8	1.9	A2A2		1.09	1.07	0.95	3216	Powerstar x Gameday
14HO17156	Pitchfork	55	75	1181	1415	1210	96	1319	71	0.11	128	0.29	199	2.51	6.6	-0.4	2.1	A2A2		0.71	0.78	0.06	3186	George Miller x Acura
14HO17164	Heist	45	65	985	1154	986	100	1318	64	0.08	97	0.17	161	2.89	5.1	0.5	1.8	A2A2		1.98	2.21	0.26	3117	Hayk x Perfect
14HO17198	Symmetry	40	60	1145	1204	1108	96	1966	78	0.06	140	0.24	218	2.75	4.0	-1.8	2.2	A2A2		1.36	1.25	0.36	3194	Lionel x Fortnite
14HO17205	Gossage	50	70	1203	1364	1301	102	1291	59	0.07	124	0.28	183	2.54	7.3	-0.8	1.4	A2A2		1.01	1.66	0.37	3166	Achieve x Bigshot
14HO17216	Day Trip	60	80	1332	1387	1574	103	1845	75	0.06	133	0.23	208	2.68	7.9	-0.3	1.9	A1A1		0.24	1.00	-0.20	3245	Sheepster x Upside
14HO17268	Heasty ♦	55	75	1210	1304	1437	102	1606	77	0.10	126	0.24	203	2.63	6.1	-1.2	2.6	A1A2		1.47	1.59	-0.37	3256	War Gear x Perfect
14HO17323	Deltoid	60	80	1283	1322	1424	102	1029	69	0.14	136	0.36	205	2.59	6.6	-0.7	2.0	A2A2		1.20	1.78	1.46	3236	Felix x Deluxe
14HO17344	Aulus	55	75	1237	1326	1321	102	1219	76	0.14	126	0.30	202	2.84	6.1	0.8	2.3	A2A2		1.11	1.28	-0.49	3268	Dominance x Spot Lite
14HO17392	Paxton	60	80	1190	1271	1362	98	1713	79	0.09	131	0.24	210	2.88	5.6	-0.9	2.9	A1A2		1.91	2.00	-0.07	3276	Sheepster x Gameday
250HO16074	Figaro ♦	45	65	923	1053	1084	106	1312	57	0.06	94	0.16	151	2.80	4.6	-0.9	2.2	A1A2	0.6	2.01	2.18	0.03	3007	Perfect x Coffee
250HO16110	Letchworth ♦	55	75	1167	1257	1249	101	1096	68	0.13	117	0.28	185	2.82	5.7	0.5	2.4	A2A2	0.9	1.41	1.31	2.39	3150	Conway x Rapid
250HO16301	Escape	45	65	916	992	965	99	1847	64	0.02	82	0.04	146	2.70	4.7	-2.1	1.8	A2A2	-0.4	2.20	2.44	0.32	2986	Perfect x Brass
250HO16304	Choices	55	75	992	1158	1115	98	849	72	0.17	99	0.25	171	2.82	4.3	-0.3	2.7	A1A2	0.1	2.05	1.58	1.58	3062	Conway x Alluve-RC
250HO16741	Hardin ♦	45	65	1162	1145	1025	91	1432	62	0.06	134	0.29	196	2.75	5.3	-3.0	2.4	A1A2	1.5	2.00	2.52	-0.02	3164	Overdo x Reliant
250HO16770	Daulton	45	65	995	1107	917	96	1327	70	0.10	112	0.23	182	2.72	3.5	-1.9	2.0	A2A2		1.91	2.30	1.06	3087	Holysmokes x Gameday
250HO16775	Helmet	50	70	1027	1049	1124	102	991	55	0.09	116	0.29	171	2.74	5.0	-1.2	1.8	A1A2	2.2	1.65	1.96	-0.41	3069	Overdo x Gameday
250HO16839	Frysky	50	70	1054	1133	1133	101	1020	52	0.07	111	0.27	163	2.64	6.0	-0.4	1.7	A1A2	3.6	2.05	2.33	0.75	3133	Holysmokes x Gameday
250HO16979	Tentastic	70	90	941	1110	995	98	1544	73	0.09	99	0.15	172	2.79	3.6	-1.3	2.2	A1A2	-1.3	2.29	2.08	0.59	3060	Holysmokes x Taos
250HO17013	Longpoint	55	75	1208	1333	1379	105	1899	75	0.05	122	0.18	197	2.73	6.2	-1.4	2.4	A2A2		1.98	2.34	0.71	3241	Ibendigo x Perfect
250HO17022	Knack ♦	55	75	1155	1229	1318	103	1212	66	0.10	135	0.33	201	2.76	4.4	-1.3	2.0	A1A2		2.17	2.21	1.21	3219	Figaro x Deluxe
250HO17100	Odirect ♦	50	70	1088	1244	1193	100	875	57	0.11	112	0.30	169	2.68	6.0	1.2	2.4	A1A2		2.25	2.17	1.02	3214	Letchworth x Gameday
250HO17108	Eskil	50	70	1035	1148	986	92	1732	69	0.05	106	0.15	175	2.79	5.0	-1.2	2.3	A2A2	0.7	2.62	2.29	1.14	3137	Esquire x Conway
250HO17118	Shetek ♦	50	70	1128	1290	1277	101	903	69	0.15	134	0.38	203	2.93	4.4	0.0	2.5	A2A2		2.12	1.83	1.35	3250	Letchworth x Perfect
250HO17129	Oza	45	65	1188	1283	1316	105	1576	73	0.09	122	0.23	195	2.58	6.0	-1.8	2.4	A2A2		1.86	1.66	1.39	3182	Letchworth x Gameday
250HO17196	Cannonball	60	80	1155	1246	1142	97	1421	65	0.07	126	0.27	191	2.72	5.2	0.8	1.8	A2A2		1.80	2.09	0.48	3261	Bolt Action x Taos
250HO17212	Cassiopeia	55	75	1124	1269	1120	102	1249	69	0.11	127	0.30	196	2.79	5.2	-1.9	2.4	A2A2		2.47	2.13	0.77	3222	Zoar x Gameday
250HO17283	Hacked	50	70	1022	1158	1136	97	1633	68	0.06	120	0.21	188	2.91	4.6	-1.1	2.5	A2A2		2.17	2.22	0.42	3167	Kahn x Perfect
250HO17295	Sunsun	45	65	1049	1261	1027	100	1312	73	0.12	121	0.26	194	2.79	4.6	-1.5	2.7	A2A2		2.20	1.38	0.19	3164	Zoar x Perfect
250HO17346	Boldness	60	80	1252	1338	1448	107	1061	63	0.11	128	0.33	191	2.58	6.6	0.2	1.9	A2A2		1.62	2.09	1.78	3243	Felix x Deluxe
250HO17387	Poplar	60	80	1183	1426	1326	100	1349	67	0.09	119	0.25	186	2.71	7.4	1.6	2.3	A2A2		1.65	1.70	-0.65	3279	Sheepster x Ahead
250HO17417	Saloon	55	75	1278	1385	1345	94	1371	70	0.10	142	0.33	212	2.79	6.8	-0.7	2.3	A2A2		1.07	1.48	0.04	3258	Sheepster x Gameday
250HO17433	Confay	60	80	1110	1276	1143	97	1348	76	0.12	118	0.25	194	2.68	5.6	-0.8	2.2	A2A2		1.99	1.98	0.19	3230	Easton x Perfect

♦ NiGen alumni. * Early Onset Muscle Weakness, Z-Lame=The lameness evaluation from Zoetis, HHPS=Herd Health Profit Dollars, SCE=Culling Ease, PL=Productive Life, SCS=Somatic Cell Count Score, DPR=Daughter Pregnancy Rate, SCR=Sire Conception Rate, PIAT=Predicted Transmitting Ability for Type, UDC=Udder Composite, RIS=Rear Leg Side View, GTP=Genomic Total Performance Index, RC=Red Carrier. Prices listed reflect semen cost. An additional fee will be added for insemination service.



See next page for additional genomic young sires

Holstein GForce (Genomic Young Sires) December 2024



Code#	Name	Sxd		GPA		DWP\$	Z-Lame	GPA Milk	GPA PRO	GPA P%	GPA FAT	GPA F%	CFP	GPA SCS	GPA PL	GPA DPR	GPA SCE	Beta Casein	GPA SCR	GPA PTAT	UDC	RLS	GTPI	Pedigree
		\$	\$	NM\$	HHP\$																			
Sexed-Only GForce																								
585HO17128	Hibiscus	75	1073	1308	1159	94	1975	73	0.04	106	0.11	179	2.63	5.7	-0.3	2.7	A2A2		2.12	2.54	0.74	3223	Kahn x Perfect	
585HO17180	Simply	75	1219	1357	1360	100	972	59	0.11	103	0.25	162	2.42	7.8	1.7	1.7	A1A2		0.52	1.24	0.34	3135	Hayk x Moonrise	
585HO17257	Oli	75	1092	1234	1215	107	1044	57	0.09	104	0.24	161	2.66	6.3	0.6	2.5	A2A2		2.32	2.21	1.32	3175	Letchworth x Gameday	
585HO17276	Botox	75	1269	1205	1154	95	1644	68	0.06	132	0.25	200	2.86	5.7	-0.8	1.9	A2A2		0.69	1.44	1.34	3151	Frost Bite x Gameday	
585HO17279	Aspartame	75	1281	1292	1292	104	1483	83	0.13	129	0.27	212	2.69	5.8	-1.4	1.9	A1A2		0.65	0.74	0.25	3165	Kahn x Pendulum	
Showcase™ GForce																								
7HO16116	Hardy	45	65	679	885	797	99	1179	55	0.07	80	0.13	135	2.77	3.1	-2.5	2.5	A1A2	2.1	3.15	2.92	0.17	2935	Perfect x Alvarez
7HO16295	Has It All	45	65	676	862	629	93	1900	63	0.01	72	0.00	135	2.99	2.9	-1.6	2.3	A2A2	-0.2	2.89	2.26	-0.48	2885	Perfect x Doc
7HO16387	Hanx-P	40	60	736	859	704	98	709	50	0.11	71	0.17	121	2.72	3.7	-0.2	2.2	A2A2	-0.3	3.35	2.48	1.31	2954	Hanans x Luster-P
7HO16491	Legendairy	35	55	298	323	225	97	437	23	0.04	37	0.08	60	3.07	1.5	-0.2	2.4	A2A2	0.8	3.42	2.45	0.96	2542	Homecoming x Doc
7HO16493	Hakan-P	40	60	603	596	515	100	1483	53	0.02	41	-0.06	94	2.94	2.8	0.2	2.5	A2A2	0.6	3.05	2.60	1.90	2778	Wolfgang-P x Luster-P
7HO16954	Diesel	40	60	725	819	482	93	1916	70	0.03	77	0.01	147	3.11	2.3	-2.1	2.2	A1A2	4.9	2.74	2.24	0.19	2878	Harmony x Doc
7HO17153	Locksmith	40	60	332	500	155	97	580	33	0.06	41	0.07	74	2.94	2.1	-1.0	3.2	A2A2		3.44	2.57	-0.15	2599	Pazzle x Doc
7HO17158	Holy-P ♦	45	65	938	1055	1153	104	1131	62	0.10	101	0.22	163	2.74	4.3	-1.1	2.6	A2A2	-4.3	3.30	2.59	0.63	3145	Figaro x Luster-P
7HO17162	Haliant-P	40	60	814	946	934	96	793	52	0.10	79	0.18	131	2.78	4.3	0.3	2.6	A2A2	0.8	3.08	2.28	0.99	3003	Pazzle x Luster-P
7HO17168	Klutch	40	60	579	653	399	94	718	42	0.07	91	0.24	133	3.00	1.9	-0.3	2.3	A2A2		3.39	2.72	1.44	2851	Dynasty x Doc
7HO17379	Drop N Hot	45	65	919	1096			1425	66	0.08	80	0.09	146	2.70	5.6	-0.1	2.6	A2A2		2.98	2.80	0.64	3097	Dropbox x Perfect
7HO17431	Applejax	45	65	738	872	853	98	1394	54	0.04	92	0.14	146	2.82	3.9	-1.7	2.2	A2A2		3.12	2.68	0.84	2967	Blakely x Perfect
250HO16115	Pazzle ♦	50	70	787	1031	841	97	688	51	0.11	96	0.27	147	2.80	3.4	-0.9	2.4	A2A2	-0.8	3.07	2.67	-0.70	3000	Rozline x Delta-Lambda
250HO16121	Partake	40	60	721	789	707	98	1197	63	0.09	60	0.05	123	3.00	3.2	-1.5	2.3	A2A2	2.1	2.95	2.56	-0.74	2861	Hanans x Delta-Lambda
250HO16388	Hanske-P	40	60	570	526	451	98	327	42	0.12	56	0.17	98	3.07	1.5	0.4	1.7	A2A2	0.4	3.04	2.32	1.33	2745	Homecoming x Luster-P
250HO16490	Lombardi	40	60	427	539	421	94	468	27	0.05	39	0.08	66	2.79	3.6	-1.1	3.1	A1A2	-0.1	3.51	3.03	0.71	2656	Delta-Lambda x Doc
250HO16498	Hulu-RC	55	75	608	679	535	100	989	50	0.07	51	0.05	101	2.79	3.2	0.0	2.8	A2A2	-0.1	3.45	2.91	1.87	2849	Wolfgang-P x Luster-P
250HO16981	Praspect	50	70	766	919	721	101	1034	56	0.09	74	0.13	130	2.84	4.0	-0.2	2.7	A1A2		2.90	2.86	-0.23	2956	Overview x Delta-Lambda
250HO17165	Hijack	45	65	804	963	626	86	1427	65	0.07	98	0.16	163	2.95	2.8	-1.7	2.5	A2A2		3.00	2.47	0.62	2992	Pazzle x Conway
250HO17266	Capsize	40	60	537	629	578	100	697	35	0.05	46	0.07	81	2.80	3.3	-0.4	2.3	A1A2		3.03	2.84	0.68	2717	Pazzle x Delta-Lambda
250HO17270	Hazzle	45	65	765	989	717	97	668	51	0.11	97	0.27	148	2.82	3.6	-1.9	2.5	A2A2		2.99	3.01	-0.18	2982	Pazzle x Perfect
250HO17297	Hantastic-P	45	65	791	919	840	97	1176	58	0.08	94	0.18	152	3.04	3.5	-0.5	2.5	A2A2		3.22	2.51	1.93	3034	Chew-P x Perfect
250HO17304	Hardwick	40	60	798	944	818	97	1616	61	0.04	84	0.08	145	2.86	3.6	0.0	2.5	A2A2		3.05	2.20	0.64	3017	Hanx-P x Perfect
250HO17410	Dazzle	45	65	827	1017	888	102	1005	56	0.09	119	0.30	175	2.77	2.6	-3.7	2.7	A2A2		3.34	2.55	-0.07	2993	Pazzle x Hanans
250HO17435	Kickstart	45	65	863	1032	886	100	1291	59	0.07	108	0.22	167	2.87	3.2	-2.0	2.0	A2A2		2.93	2.66	0.65	3044	Pazzle x Perfect
250HO17560	Parian-P	40	60	747	881	863	102	1151	62	0.10	70	0.10	132	2.95	3.8	-1.3	2.2	A2A2		3.59	3.29	0.25	2986	Hanx-P x Delta-Lambda
Showbox GForce																								
744HO16956	Hendrix	35	50	331	420	160	95	687	40	0.07	20	-0.02	60	2.96	1.7	-0.5	2.0	A1A2		3.16	2.45	1.13	2541	Tatoo x Doc
744HO17043	Flash	35	50	-295	-302	-369	101	-373	-17	-0.02	-8	0.03	-25	2.93	-2.0	-3.6	2.0	A2A2		2.99	2.37	2.04	1851	Tatoo x Solomon
744HO17072	Heritage-P-RC	40	55	496	566	266	96	1529	47	0.00	43	-0.06	90	3.06	2.3	-0.2	2.6	A2A2		2.77	2.37	-0.30	2673	Max-PP x Doc
744HO17073	Hazard-PP	35	50	503	522	351	103	1141	31	-0.02	55	0.04	86	2.94	2.1	-0.8	2.1	A2A2		2.01	1.79	0.93	2610	Luster-P x Mirand
744HO17076	Acetylene-Red	40	55	379	381			855	38	0.04	53	0.08	91	3.02	1.3	-3.5	2.2	A1A2	-5.5	3.46	2.45	0.38	2560	Rompen-Red x Doc
744HO17421	Lacteur	40	55	274	400	91	98	683	30	0.03	29	0.01	59	2.89	1.3	0.1	2.4	A2A2		2.89	2.26	-0.11	2523	Bullseye x Tropic
744HO17422	Kingme-P	40	55	550	592	433	97	842	32	0.02	42	0.04	74	2.87	2.7	0.4	2.1	A2A2		3.01	2.63	0.59	2715	Lustrous-PP x Noble
744HO17423	Jinx	45	60	491	484	368	93	1425	44	0.00	44	-0.04	88	2.88	2.9	-2.4	2.6	A1A2		3.24	2.77	-0.30	2663	Delta-Lambda x Doc
744HO17425	Hellion	45	60	666	783	564	95	1579	58	0.03	79	0.07	137	2.89	2.7	-2.3	2.3	A2A2		3.47	2.81	0.08	2875	Dropbox x Doc
744HO17546	Asher-Red	40	55	-89	69	-136	87	-1042	-8	0.10	6	0.19	-2	2.91	0.7	-0.7	3.6	A1A2		3.05	2.27	0.48	2114	Allitude-Red x Advent-Red
744HO17701	Miraculous-Red	40	55	5	15	-71	104	-163	-5	0.00	24	0.12	19	2.89	-0.1	0.0	2.8	A1A1		1.72	1.69	-0.48	2166	Alpha x Unstopabull
744HO17702	Image	45	60	337	522	335	98	993	45	0.05	47	0.03	92	3.00	0.9	-2.8	2.4	A2A2		3.39	2.57	1.16	2589	Sidekick x Doc
Red and White GForce																								
7HO17155	Exclusive-Red	55	75	864	964	827	94	1018	49	0.06	87	0.18	136	2.88	4.6	0.8	1.9	A2A2	1.9	2.00	1.47	0.55	2937	Network-Red x Perfect
7HO17284	Hard Rock-RC	50	70	988	1256	1083	98	1598	68	0.06	99	0.14	167	2.81	5.1	0.9	2.2	A1A2		1.96	1.87	0.78	3110	Hayk x Perfect

7HO17428	Pamazé-Red	45	65	876	998	1068	103	1274	55	0.05	81	0.12	136	2.72	5.7	0.6	2.0	A1A2		1.42	1.63	0.76	2941	Freestyle-Red x Gameday
7HO17465	Poa-Red	45	65	913	964	1076	103	961	36	0.02	75	0.14	111	2.63	5.8	-0.1	1.7	A1A2		0.83	1.44	-0.07	2828	Fireball-Red x Trumpet-Red
14HO17402	Sunday-RC	50	70	1175	1204	1132	98	1893	82	0.08	132	0.22	214	2.91	4.3	-1.4	1.9	A1A2		1.04	1.16	0.40	3162	Dominance x Acura
14HO17429	Pabulous-Red	40	60	836	1013	1032	102	696	45	0.09	84	0.22	129	2.63	5.0	0.8	2.0	A1A2		2.01	2.04	1.31	2958	Freestyle-Red x Gameday
250HO16498	Hulu-RC	55	75	608	679	535	100	989	50	0.07	51	0.05	101	2.79	3.2	0.0	2.8	A2A2	-0.1	3.45	2.91	1.87	2849	Wolfgang-P x Luster-P
250HO17050	Squibb-Red	40	60	722	819	783	94	1112	48	0.05	66	0.09	114	2.74	3.7	-1.0	2.3	A2A2		2.50	2.53	0.89	2841	Rebel-Red x Acura
Polled GForce																								
7HO16261	Lilsmooth-P	35	55	979	1012	1071	96	1121	53	0.07	77	0.13	130	2.61	7.2	-0.1	2.0	A2A2	0.7	1.28	1.74	-0.71	2956	Bedrock-PP x Legacy
7HO16387	Hanx-P	40	60	736	859	704	98	709	50	0.11	71	0.17	121	2.72	3.7	-0.2	2.2	A2A2	-0.3	3.35	2.48	1.31	2954	Hanans x Luster-P
7HO16493	Hakan-P	40	60	603	596	515	100	1483	53	0.02	41	-0.06	94	2.94	2.8	0.2	2.5	A2A2	0.6	3.05	2.60	1.90	2778	Wolfgang-P x Luster-P
7HO16664	Hubert-PP	35	55	869	1051	1028	96	457	45	0.12	97	0.31	142	2.58	4.9	0.0	2.0	A2A2	-0.4	1.30	1.92	0.34	2919	Entice-P x Monument-P
7HO16931	Frosting-P	35	55	880	884	853	97	749	48	0.09	109	0.31	157	2.86	3.4	-1.2	1.9	A2A2		1.02	0.91	0.17	2851	Remover-PP x Monument-P
7HO17101	Karma-PP	40	60	689	876	676	98	1042	48	0.06	61	0.08	109	2.61	5.0	-0.2	2.7	A2A2		2.61	2.08	1.01	2893	IsOn-P x Luster-P
7HO17158	Holy-P ♦	45	65	938	1055	1153	104	1131	62	0.10	101	0.22	163	2.74	4.3	-1.1	2.6	A2A2	-4.3	3.30	2.59	0.63	3145	Figaro x Luster-P
7HO17162	Haliant-P	40	60	814	946	934	96	793	52	0.10	79	0.18	131	2.78	4.3	0.3	2.6	A2A2	0.8	3.08	2.28	0.99	3003	Puzzle x Luster-P
7HO17255	Reverie-P	45	65	993	1147	1126	100	899	65	0.14	116	0.31	181	2.81	4.1	-0.8	2.4	A2A2		1.71	2.02	0.58	3104	Chew-P x Perfect
7HO17315	Sage-P	50	70	1121	1124	1210	104	1537	60	0.04	105	0.17	165	2.68	7.0	0.4	2.0	A2A2		0.80	1.73	1.41	3041	Felix x Bedrock-PP
7HO17370	Snowhare-PP	45	65	1072	1055	1151	96	1375	67	0.09	114	0.23	181	2.83	4.6	-2.2	2.2	A2A2		1.27	1.52	0.88	3031	Chew-P x Entice-P
7HO17414	Hanglen-PP	45	65	950	982			1542	58	0.03	80	0.08	138	2.92	6.3	-1.1	1.7	A2A2		0.83	1.62	-0.01	2886	Cirrus-P x Bedrock-PP
14HO15929	Cirrus-P ♦	45	65	867	1034	876	100	974	57	0.10	84	0.18	141	2.91	5.5	-0.2	1.6	A2A2	0.7	1.24	1.45	-0.21	2912	Perfect x Kenobi
14HO17016	Page-PP	40	60	886	1037	986	100	1033	53	0.08	92	0.20	145	2.79	4.7	-0.2	1.9	A2A2		1.42	1.66	0.88	2939	Chew-P x Bedrock-PP
14HO17133	Madrid-P	45	65	1101	1271	1301	105	1108	55	0.08	111	0.26	166	2.72	7.3	0.3	2.0	A2A2		1.23	1.94	-0.69	3116	Cirrus-P x Gameday
14HO17389	Futurist-PP	40	60	1030	1093	968	96	989	47	0.06	96	0.22	143	2.66	7.3	0.0	1.5	A1A2		0.74	1.45	0.19	2962	Cirrus-P x Bedrock-PP
14HO17525	Christan-PP	40	60	865	911	1041	106	750	34	0.04	81	0.20	115	2.70	6.3	0.0	1.8	A2A2		1.22	1.63	-0.32	2848	Acti-P x Luster-P
250HO16388	Hanske-P	40	60	570	526	451	98	327	42	0.12	56	0.17	98	3.07	1.5	0.4	1.7	A2A2	0.4	3.04	2.32	1.33	2745	Homecoming x Luster-P
250HO17136	Enthuse-P	45	65	998	1121	1169	104	1280	60	0.07	85	0.13	145	2.47	5.8	-0.3	2.2	A1A2		1.93	2.00	0.75	3052	Amen-PP x Gameday
250HO17144	Dugout-P	45	65	1093	1235	1299	99	1244	72	0.12	115	0.25	187	2.75	5.0	-1.4	2.3	A2A2		1.47	1.24	1.83	3091	Kahn x Conway
250HO17152	Cruz-PP	40	60	915	1028	991	93	1218	59	0.08	93	0.17	152	2.90	4.9	-1.4	2.3	A2A2		1.86	1.93	1.05	2968	General Tso-P x Perfect
250HO17202	Bulloney-P	50	70	1207	1210	1227	102	1637	82	0.11	125	0.23	207	2.93	5.9	-2.4	2.1	A2A2		1.55	1.33	0.88	3153	Sheepster x Bedrock-PP
250HO17297	Hantastic-P	45	65	791	919	840	97	1176	58	0.08	94	0.18	152	3.04	3.5	-0.5	2.5	A2A2		3.22	2.51	1.93	3034	Chew-P x Perfect
250HO17299	Pancredible-P	40	60	1070	1093	1016	97	1411	69	0.09	110	0.21	179	2.92	4.1	-1.1	1.5	A2A2		1.42	1.73	1.44	3068	Cumulus x Extra-P
250HO17302	Baldy-P	45	65	966	1027	1031	100	1416	58	0.05	81	0.10	139	2.72	5.5	0.2	2.3	A2A2		1.92	2.39	-0.66	3039	Remover-PP x Spot Lite
250HO17395	A-Team-P	35	55	975	1080	1137	101	1413	62	0.06	79	0.09	141	2.74	6.3	-0.4	1.8	A1A2		1.58	1.91	-0.44	3005	Lilsmooth-P x Perfect
250HO17420	Crunch-P	40	60	963	1077	1025	92	1214	53	0.05	88	0.16	141	2.74	6.5	1.4	2.2	A2A2		1.86	1.80	0.15	3064	Lilsmooth-P x Perfect
250HO17531	Oyster-P	40	60	841	986	860	95	203	38	0.12	95	0.34	133	2.64	3.9	1.6	1.8	A1A2		2.32	1.83	-0.24	2997	Hanx-P x Granite
250HO17560	Parian-P	40	60	747	881	863	102	1151	62	0.10	70	0.10	132	2.95	3.8	-1.3	2.2	A2A2		3.59	3.29	0.25	2986	Hanx-P x Delta-Lambda
GForce+ (High Fertility)																								
7HO15898	Wintergreen-P	22	45	887	952	1005	104	553	55	0.14	94	0.28	149	2.88	4.5	-1.7	2.1	A2A2		0.19	0.87	1.00	2776	Extra-P x Rome
7HO15967	High Oohm	22	45	915	971	865	101	993	58	0.10	111	0.27	169	2.81	3.1	-1.1	2.4	A1A2	2.6	1.48	1.97	0.10	2962	Highjump x Granite
14HO15831	East	22	45	1017	1034	1124	99	2087	77	0.04	97	0.06	174	2.73	4.5	-1.1	2.1	A1A2	1.9	1.35	1.57	0.18	3033	Taos x Brass
14HO15903	Cloud	22	45	1032	1073	1310	105	933	63	0.13	87	0.19	150	2.80	5.7	-0.3	1.7	A2A2	2.1	0.12	1.23	1.22	2907	Extra-P x Rome
14HO15926	Van Gogh ♦	22	45	1237	1231	1435	95	1833	72	0.05	133	0.23	205	2.66	6.7	-1.6	1.9	A2A2	1.8	0.1	0.43	-1.01	3076	Top Dog x Acura
14HO16270	Tyler	22	45	1160	1148	1449	100	1413	66	0.08	112	0.21	178	2.84	6.4	0.4	2.4	A2A2	2.0	0.83	0.53	-0.16	3067	Crusher x Legacy

♦ NxGEN alumni, * Early Onset Muscle Weakness, Z-Lame=The lameness evaluation from Zoetis, HHPS=Herd Health Profit Dollars, SCE=Culling Ease, PL=Productive Life, SCS=Somatic Cell Count Score, DPR=Daughter Pregnancy Rate, SCR=Sire Conception Rate, PTAT=Predicted Transmitting Ability for Type, UDC=Udder Composite, RLS=Rear Leg Side View, GTP=Genomic Total Performance Index, RC=Red Carrier. Prices listed reflect semen cost. An additional fee will be added for insemination service.

On the cover ... Mating guide: *NxGEN sires, ♦ NxGEN alumni. Photos from Reed Dairy Farm, Owosso, Mich., are featured, as well. Reed Dairy Farm won a CentralStar ReproStar Award, this year; they have a whole-herd pregnancy rate of 38%, with third- and greater-lactation cows averaging 40%. Learn more about the Reed family and other ReproStar winners in the 2025 CentralStar Big Book. Follow the QR code.



Products sold by Select Sires Inc. or its affiliates to a buyer shall not be used other than as authorized by the terms and conditions in the sales invoice. Each conventionally processed semen straw (not sex sorted) shall be used only for insemination of a female bovine. ALL OTHER USES OF BOVINE SEMEN FROM SELECT SIRES INC. AND ITS AFFILIATES ARE STRICTLY PROHIBITED WITHOUT THE PRIOR WRITTEN CONSENT OF SELECT SIRES INC. INCLUDING (WITHOUT LIMITATION) GENOTYPING, SEQUENCING, CLONING, GENETIC ANALYSIS, GENETIC MANIPULATION OR FOR RESEARCH. Select Sires Inc., its member cooperatives, its agents or employees cannot and do not guarantee the conception rate, gender, quality or productivity to be obtained in connection with the use of its products or recommended techniques. It makes no warranties of any kind whatsoever, expressed or implied, which extend beyond the description of its products and hereby disclaims all warranties of merchantability and fitness for a particular purpose. In the unlikely event that any of our products shall be proven to be defective, damages resulting from their use shall exclude consequential damages and be limited to the purchase price of the product. All gender SELECTED semen is processed using Ultraplus™ technology. Ultraplus is a trademark of Inguran LLC. *gender SELECTED semen is a trademark of Select Sires Inc. ©Wellness Trait Index, WIS, Dairy Wellness Profit Index, DWPS, and CLARIFIDE are registered trademarks of Zoetis Inc., its affiliates and/or its licensors. *Showcase and GForce are trademarks of Select Sires, Inc. ©NxGEN, ProfitSOURCE, Herd Health Profit Dollars (HHPS), Mastitis ResistantPRO, and the Select Sires logo are registered trademarks of Select Sires Inc. ©TIPI is a registered trademark of Holstein Association USA. *SimAngus is a trademark of the American Simmental Association. Limitations and Conditions of Sale: gender SELECTED semen shall be used only for the single insemination of one female bovine during single ovulation with the intent to produce

a single offspring unless specifically approved on an individual customer basis by Sexing Technologies (ST) in writing. ST agrees, however, that Select Sires' customers may use 4,000,000 concentration straws for superovulation or IVF so long as the service provider or the end-user is authorized for such use under an independent license (other than this agreement) by XY. AS A CONDITION OF PURCHASING GENDER SELECTED SEMEN, THE PURCHASER AGREES THAT GENDER SELECTED SEMEN WILL NOT BE REVERSE SORTED OR RESORTED UNLESS SPECIFICALLY PERMITTED, IN ADVANCE, ON A CASE-BY-CASE BASIS BY SELECT SIRES INC. IN WRITING. All other uses of gender SELECTED semen from Select Sires Inc. and its affiliates are strictly prohibited without the prior written consent of Select Sires Inc. including (without limitation) genotyping, sequencing, cloning, genetic analysis, genetic manipulation or for research. Select Sires intends to monitor the use of gender SELECTED semen and vigorously enforce these restrictions on use. Buyer assumes all responsibility for use, storage and handling of herd-management products. Select Sires Inc. makes no claims or warranties, expressed or implied. ©First Day Formula is a registered trademark of Select Sires Inc. *Build A Better Calf is a trademark of Select Sires Inc. Manufactured for Select Sires Inc., 11740 US 42N, Plain City, OH 43064. *CONVERT and Select DTX are trademarks of Agrarian Marketing Corporation®, Middlebury, IN. ©BioFresh is a registered trademark of Agrarian Marketing Corporation®, Middlebury, IN. Product listed is merely distributed by Select Sires Inc. and manufactured or processed by the company indicated. All claims, representations and warranties, expressed or implied, are made only by the manufacturer and not by Select Sires Inc. More legal information can be found at www.mycentralstar.com/legal-notices/.



ProfitSOURCE[®]

Your SOURCE for beef on dairy PROFIT!

ProfitSOURCE is a leading beef x dairy program, backed by research trials and everyday results fueled by traceability. Sires are selected to meet your fertility and calving ease expectations, while also offering different profiles of growth and carcass traits desired by beef supply chain partners. Learn more about ProfitSOURCE from your CentralStar team.



Sires are updated monthly. Scan for the most up-to-date list.

ANGUS SIRES

Price	Code / Name	Fertility	CE %Rank	BW %Rank	YW %Rank	RADG %Rank	CW %Rank	Marb %Rank	RE %Rank	\$B %Rank	\$AxH %Rank
\$22	7AN526 CHECK IT	****	12 15	-1.1 10	118 45	0.31 15	46 55	1.05 15	0.91 20	174 20	174 10
\$27	7AN572 FOR SURE	****	5 60	1.8 65	140 15	0.33 5	65 20	1.30 5	1.01 10	206 4	186 10
\$22	2AN588 HIGH RANK *	****	2 85	1.5 55	144 15	0.34 4	57 40	0.94 30	1.09 10	177 20	179 15
\$25	2AN613 AMARILLO *	****	6 55	1.7 60	143 15	0.30 20	66 20	1.11 20	1.01 15	188 15	186 15
\$25	2AN619 CIMARRON *	***	10 25	1.3 55	153 5	0.28 35	76 10	1.29 10	1.10 10	199 10	192 10
\$25	2AN620 / 714AN620 APPROACH *	****	8 40	1.3 55	122 40	0.25 60	51 55	1.30 10	1.05 15	185 15	203 10
\$27	714AN626 KING WILLIAM	****	10 25	0.5 35	156 4	0.35 3	75 10	1.30 10	0.82 35	215 3	193 10
\$25	7AN627 TAKE AIM	****	11 15	0.6 35	147 10	0.28 30	64 20	1.32 4	0.80 30	198 5	215 3
\$25	714AN639 WHITEWATER	****	11 15	2.1 70	138 20	0.34 4	58 40	1.11 20	0.77 40	189 15	201 10
\$22	2AN650 LOCOMOTION *	****	7 45	1.2 50	128 30	0.29 25	61 30	0.96 25	0.94 20	181 20	177 15
\$22	2AN651 RULER *	****	10 25	1.2 50	126 35	0.32 10	51 55	0.80 40	0.73 45	169 30	164 20
\$25	714AN652 FEATURE	****	3 75	3.9 95	141 15	0.27 40	68 20	1.07 20	1.23 4	194 10	203 10
\$27	714AN661 HEADWAY	***	7 45	2.3 75	134 25	0.29 25	58 49	1.55 3	1.13 10	211 4	241 2
\$25	714AN663 OUTPUT	*****	8 40	1.4 55	143 10	0.28 35	67 20	1.20 15	1.00 15	192 10	201 10

Price	Code / Name	Fertility	CE %Rank	BW %Rank	YW %Rank	RADG %Rank	CW %Rank	Marb %Rank	RE %Rank	\$B %Rank	\$AxH %Rank
\$22	714AN693 JAMES	****	16 2	-2.0 4	127 35	0.26 50	62 30	1.24 10	1.11 10	190 15	203 10
\$27	714AN694 TEDDY	****	8 40	3.0 85	166 2	0.37 2	87 2	0.83 40	1.26 3	211 4	203 10
\$27	2AN705 BUCKLIN *	****	11 15	0.2 30	121 45	0.27 40	51 55	1.48 4	0.90 25	197 10	224 3
\$25	714AN711 COLDWATER	****	15 3	-0.9 15	127 35	0.25 60	47 65	1.17 15	1.20 5	181 20	215 5
\$27	714AN734 NICHOLS	****	12 10	1.7 60	161 3	0.30 20	80 4	1.24 10	1.38 2	220 2	236 2
\$22	7AN742 MONROE	****	12 10	-0.9 15	142 15	0.32 10	64 25	0.85 35	0.98 20	175 20	192 10
\$27	2AN763 DAYTON *	***	11 15	1.2 50	142 15	0.30 20	72 15	1.24 10	1.23 4	211 4	238 2
\$25	714AN774 BOSWELL	****	11 15	0.2 30	144 15	0.32 10	65 25	1.19 15	1.12 10	200 10	221 4
\$25	714AN775 SOLOMON	*****	14 4	0.0 25	141 15	0.32 10	58 40	1.37 10	1.60 1	206 5	238 2
\$25	714AN777 GEMSTONE	****	12 10	0.2 30	149 10	0.36 2	56 45	0.95 30	0.99 15	173 25	191 10
\$27	714AN790 HARRISON	****	11 15	1.6 60	144 15	0.35 3	71 15	1.27 10	0.99 15	221 2	245 1
\$27	714AN791 GRANT	****	10 25	0.9 45	145 15	0.34 4	68 20	1.64 2	1.15 10	232 1	270 1
\$27	2AN803 NEVADA *	****	4 70	3.3 90	161 3	0.34 4	74 10	1.71 2	1.26 3	232 1	266 1
\$27	714AN804 TRUMAN	****	8 40	2.3 75	151 10	0.35 3	73 10	1.56 3	0.86 30	221 2	218 4

* Denotes sires that qualify for TD Beef. *ProfitSOURCE and the Select Sires logo are registered trademarks of Select Sires Inc., Plain City, Ohio. EPD Data: 11/23/24 American Simmental Association, American International Charolais Association, North American Limousin Foundation and American Angus Association.

SIMANGUS™ SIREs

Price	Code / Name	Fertility	CE %Rank	BW %Rank	YW %Rank	RADG %Rank	CW %Rank	Marb %Rank	RE %Rank	TI %Rank
\$22	7SM84 MADISON	****	13.5 40	0.0 50	117.3 50	0.30 30	37.3 40	0.70 10	1.06 5	86.7 30
\$22	2SM107 / 714SM107 MAINSTREAM *	****	14.5 30	0.8 65	138.7 15	0.33 15	39.4 30	0.34 55	0.81 30	86.0 35
\$22	2SM110 VIKING *	****	11.8 65	0.9 70	138.9 15	0.30 30	52.7 10	0.41 45	0.81 30	88.3 25
\$22	714SM111 COMBAT	*****	13.1 45	-0.2 45	131.6 25	0.33 15	52.5 10	0.58 20	0.72 45	87.2 30
\$22	2SM114 / 714SM114 PREDICTABLE * ^	****	17.4 10	-1.0 35	116.7 55	0.25 60	46.9 15	0.64 15	0.78 35	89.5 20
\$22	714SM117 WINCHESTER ^	*****	14.9 25	0.1 50	132.2 25	0.33 15	34.6 45	0.64 15	0.07 99	86.2 35
\$22	714SM118 COLT ^	****	11.5 65	-0.4 45	124.5 35	0.25 60	35.2 45	0.67 15	0.45 90	90.4 20
\$22	714SM120 SPRINGFIELD ^	****	11.5 65	1.8 85	129.5 30	0.27 50	25.3 75	0.43 40	0.68 50	85.5 35
\$25	714SM129 WABASH	****	12.4 55	0.6 60	145.9 10	0.36 10	43.1 25	1.08 1	0.84 25	106.0 1
\$25	2SM130 FLINT HILLS *	****	9.5 90	3.0 95	148.6 10	0.37 4	36.9 40	1.13 1	0.89 20	104.6 1
\$25	714SM131 RILEY ^	****	14.1 35	0.3 55	139.0 15	0.32 20	48.7 15	0.92 3	1.25 1	102.2 2
\$25	714SM132 BLUEMONT ^	****	10.3 80	2.6 90	163.8 1	0.39 2	67.7 1	1.07 1	1.10 4	110.4 1
\$25	7SM141 / 2SM141 ALPHA *	****	10.1 85	0.7 65	153.7 3	0.37 4	62.5 2	0.64 15	1.09 4	99.3 4
\$25	714SM143 TALLGRASS		16.8 15	-2.1 20	139.8 15	0.34 15	52.7 10	1.12 1	1.07 5	109.1 1
\$25	2SM144 FLINTSTONE *	****	16.0 15	-0.8 35	137.0 15	0.35 10	57.4 4	1.12 1	1.24 1	106.0 1

LIMOUSIN SIREs

Price	Code / Name	Fertility	CE %Rank	BW %Rank	YW %Rank	CW %Rank	REA %Rank	Marb %Rank	\$MTI %Rank
\$20	7LM15 AFRICA %LM	****	12 25	0.1 30	88 70	18 70	1.83 1	0.13 40	59.06 35
\$20	7LM18 DAVY CROCKET LIM-FLEX	****	14 15	0.0 30	89 90	52 15	1.02 10	0.68 4	73.84 10
\$20	7LM19 FARMER JOE LIM-FLEX	****	10 55	0.3 35	109 50	32 60	1.37 2	0.63 10	75.83 10
\$20	7LM20 FILMER	****	15 10	-0.6 20	98 75	15 95	0.64 45	0.63 10	74.93 10
\$20	7LM21 HOGAN	*****	-2 95	5.9 95	129 20	-3 95	0.66 45	0.10 85	64.63 40
\$20	7LM22 HIGH COURT	****	4 95	5.9 95	133 15	40 35	0.91 20	0.43 25	72.41 15

If you are looking for alternatives to a premium beef x dairy program, ask about economy beef sires.

CHAROLAIS SIREs

Price	Code / Name	Fertility	CE %Rank	BW %Rank	YW %Rank	CW %Rank	REA %Rank	Marb %Rank	TSI %Rank
\$25	2CH96 AFFINITY *		17.0 10	-5.9 3	108 60	13 65	0.43 80	0.32 6	252 75
\$25	9CH99 FREE RIDE	*****	16.1 15	-5.0 6	105 65	10 75	0.56 60	0.27 10	250 80
\$25	9CH103 / 2CH103 LEAD TIME *	****	11.8 45	-4.5 8	100 75	21 40	0.59 55	0.30 7	266 50
\$25	2CH104 NEW MAN	*****	18.5 5	-2.8 25	107 60	26 25	0.78 25	0.47 1	283 20
\$25	9CH105 / 2CH105 SILVERSMITH *	****	8.3 70	-0.4 60	122 35	35 7	1.10 3	0.39 2	300 6
\$25	9CH106 FOREMAN	****	16.9 10	-3.5 20	122 35	24 30	0.72 35	0.31 6	274 35
\$25	9CH111 KADE		15.7 15	-2.1 35	114 45	23 60	1.17 1	0.38 3	291 9
\$25	9CH112 KIDRON	*****	18.1 4	-5.0 5	110 55	28 40	0.82 25	0.43 1	292 9
\$25	9CH113 CHANNEL		14.2 25	-2.0 35	118 40	28 40	0.60 75	0.28 9	274 30
\$25	9CH119 MEDIATOR		12.5 40	-2.2 30	119 35	33 20	1.02 5	0.24 20	290 10

ANGUS PACKS

Price	Code	Pack Name	Pack Description
\$22	714AN1000 714AN1001 714AN1002	CALVING EASE	<ul style="list-style-type: none"> Sires with growth and carcass merit Each sire in the pack ranks in the Top 10% for \$AxH Use to lower dystocia risk
\$25	714AN10014	MUSCLING / RIBEYE	<ul style="list-style-type: none"> Each sire in the pack ranks over +1.0 for both Marbling and Ribeye Each sire in the pack ranks in the Top 10% for \$AxH Raise the bar for muscling
\$25	714AN10008 714AN10009	EXPLOSIVE GROWTH **	<ul style="list-style-type: none"> Average over +1.0 for Marbling and Ribeye Each sire in the pack ranks in the Top 10% for \$AxH More pounds = More pay weight!
\$22	2AN10001	BALANCED *	<ul style="list-style-type: none"> Proven carcass merit Each sire in the pack ranks in the Top 10% for \$AxH Covering all the bases
\$27	2AN10013	PRIME PACK *	<ul style="list-style-type: none"> Moderate Birth Weight with elite carcass merit Each sire in the pack ranks in the Top 2% for \$AxH Major quality grade advantages

CHAROLAIS PACK

Price	Code	Pack Name	Pack Description
\$25	2CH10001	MARBLING *	<ul style="list-style-type: none"> Substantial carcass yield benefits Gain more quality premiums

SIMANGUS PACK

Price	Code	Pack Name	Pack Description
\$25	714SM1000	GROWTH	<ul style="list-style-type: none"> High Terminal Index Added growth

MALE SORTED PACKS

Price	Code	Pack Description
\$45	689SM101M	80% MALE PACK
\$45	689SM3M	PACK 3
\$45	689AN7M	PACK 7

* Denotes sires that qualify for TD Beef. ^ Denotes sires that qualify for Power Genetics. ** Denotes eligibility for export

Holstein Progeny Proven

December 2024



Code#	Name	Sxd					Beta															Pedigree		
		\$	\$	NM\$	HHP\$	DWP\$	Z-Lame	Milk	Pro	Pro%	Fat	Fat%	CFP	SCS	PL	DPR	SCE	Casein	SCR	PTAT	UDC		RLS	GTPI
7HO14160	Luster-P	50	70	787	704	613	102	1690	52	-0.01	81	0.06	133	2.80	3.1	-0.8	2.5	A2A2	-1.0	2.54	2.05	1.30	2898	Zipit-P x Kingboy
7HO14229	Tahiti	34	55	1109	1049	966	98	2227	77	0.02	106	0.07	183	2.93	4.9	-2.0	1.7	A2A2	-1.0	0.75	0.99	2.42	2949	Frazzled x Delta
7HO14320	Alphabet	40	60	907	899	891	93	2771	71	-0.06	106	0.00	177	3.01	2.9	-3.3	2.1	A1A2	-0.1	1.40	1.40	-1.79	2859	Helix x Yoder
7HO14454	Lionel	50	70	1150	1125	1107	96	3187	95	-0.02	146	0.08	241	2.83	2.4	-4.4	2.5	A2A2	-0.1	0.76	0.78	0.37	3108	Frazzled x Montross
7HO14694	Banjo-P	40	60	732	961	644	98	1360	66	0.09	82	0.11	148	2.87	1.3	1.0	2.2	A2A2	1.6	1.34	1.41	-0.89	2912	Bight-P x Heisenberg
7HO14985	Rupert	60	80	1033	1159	1093	100	2174	82	0.05	119	0.13	201	2.92	3.4	0.6	2.6	A2A2	-0.3	1.10	0.80	0.20	3081	Renegade x Matters
7HO15085	Perfect ♦	65	85	824	1130	843	92	1431	67	0.08	100	0.17	167	2.91	3.3	-1.1	2.2	A2A2	-1.1	2.37	2.13	0.07	3064	Renegade x Delta-Lambda
7HO15112	Taos	55	75	886	1159	812	97	1908	80	0.07	81	0.03	161	2.79	5.1	1.8	2.4	A1A2	-1.7	1.67	1.20	-0.27	3055	Renegade x Jedi
7HO15203	Boeing-P-Red	30	50	739	777	753	101	958	50	0.07	76	0.15	126	2.85	3.2	-1.4	1.8	A2A2	-0.3	1.18	0.91	-1.26	2701	Webster-P-RC x Jedi
7HO15233	Milky	40	60	1183	1136	1350	100	1857	78	0.07	127	0.20	205	2.94	4.3	-3.0	2.2	A2A2	-1.0	0.57	1.21	0.05	3069	Lionel x Achiever
7HO15245	Perpetual ♦	40	60	1100	1240	1174	96	1976	80	0.06	138	0.23	218	2.62	4.0	-2.9	2.5	A1A2	-0.3	0.76	0.40	-0.25	3083	Lionel x Medley
7HO15266	High Demand	30	50	843	972	968	98	785	55	0.11	82	0.20	137	2.75	4.0	1.1	2.5	A1A2		1.48	1.31	1.43	2909	Riveting x Helix
7HO15366	Agassi	34	55	1004	1067	981	107	878	53	0.10	93	0.22	146	2.75	4.6	2.1	1.9	A1A2	-1.5	0.76	1.16	-0.49	3004	Wimbledon x Matters
7HO15396	Huck ♦	40		1040	1077	954	90	1887	71	0.04	99	0.10	170	2.71	6.0	-1.5	1.9	A2A2		1.49	1.76	0.87	3032	Legacy x Yoda
7HO15427	Rompen-Red	45	65	532	544	496	98	1291	34	-0.03	26	-0.09	60	2.77	3.5	-1.6	1.7	A1A2	-3.0	2.29	2.29	1.10	2582	Altuve-RC x Splendid-P-RC
7HO15440	Handy-Red	40	60	726	708	728	102	1383	42	-0.01	58	0.02	100	2.88	3.5	-1.3	1.2	A1A2	1.8	1.64	1.52	0.61	2676	Webster-P-RC x Salvatore-RC
7HO15465	Crusher ♦	50	70	1196	1204	1247	100	818	68	0.16	144	0.43	212	2.80	4.9	-1.2	2.4	A1A2	2.3	0.87	0.51	-0.03	3106	Calvary x Legendary
7HO15471	Zz Top	50	70	886	1112	935	93	2092	84	0.06	91	0.04	175	3.02	2.6	0.3	2.1	A1A2	-1.4	1.50	1.47	1.57	3022	Renegade x Zipit-P
7HO15523	Parsly	55	75	936	941	1017	100	1781	76	0.07	85	0.06	161	2.93	4.6	-0.5	2.4	A2A2	0.2	1.60	1.92	-1.14	2989	Town x Delta-Lambda
7HO15606	Everyhour ♦	40		1100	1103	1306	97	2034	68	0.01	105	0.10	173	2.55	4.7	-3.3	2.1	A1A2		0.83	1.32	1.37	2962	Heroic x Reason
7HO15624	Superb	45	65	949	1056	942	105	1306	61	0.07	98	0.18	159	2.66	4.9	0.5	2.0	A2A2		1.49	1.98	-0.35	3036	Einstein x House
7HO15640	Moonraker	45	65	807	1016	820	97	1307	48	0.02	79	0.11	127	2.80	5.0	2.0	2.3	A1A1	-0.9	2.08	1.91	-0.19	3006	Renegade x Wings
7HO15778	Beethoven ♦	50	70	986	1056	982	93	1649	71	0.07	102	0.14	173	2.68	5.8	-1.6	2.7	A2A2	1.4	0.96	1.02	-0.04	2974	Taos x Legacy
7HO15821	Frost Bite ♦	45	65	1074	1032	1081	103	1451	57	0.04	89	0.12	146	2.97	6.5	0.2	1.5	A2A2	0.2	0.35	0.91	1.03	2918	Granada x Lionel
14HO14629	Sertoli	45	65	875	965	756	96	1480	60	0.05	91	0.13	151	2.73	3.6	1.2	2.8	A1A2	1.3	1.27	1.50	1.07	2973	Festivus x Rubicon
14HO15179	Trooper	65	85	1004	1208	933	99	1212	77	0.14	120	0.28	197	2.93	4.1	0.4	2.4	A1A2	-0.4	1.87	1.47	-0.46	3196	Renegade x Legendary
14HO15201	Moonshiner ♦	35	55	981	959	603	97	1934	71	0.04	82	0.03	153	2.78	4.1	-1.2	1.6	A1A2	-0.3	1.66	1.70	1.55	2953	Tahiti x Flagship
14HO15223	Conway ♦	45	65	878	1087	906	93	522	61	0.17	116	0.37	177	3.04	2.9	-1.1	2.4	A2A2	-2.7	1.91	1.17	1.91	2979	Renegade x Granite
14HO15301	Gordy	50	70	1126	1120	1279	101	1698	64	0.04	110	0.17	174	2.74	5.3	-1.0	1.9	A1A2	1.8	0.44	1.08	2.55	3000	Riveting x Granite
14HO15367	Knockout	40	60	1007	1065	1044	104	1341	54	0.04	96	0.17	150	2.78	5.7	0.1	2.1	A2A2	-0.3	0.68	0.67	1.13	2927	Eisaku x Achiever
14HO15369	Trumpet-Red	35	55	803	851	944	100	724	28	0.02	65	0.14	93	2.49	5.2	0.8	1.5	A1A1		0.78	1.09	0.80	2704	Ronald x Helix
14HO15460	Simba	40	60	1124	1045	1093	99	975	59	0.11	139	0.38	198	2.87	4.0	-0.9	2.2	A1A2	2.4	0.64	0.75	0.56	3055	Billy x Brennan
14HO15582	Mashak ♦	45	65	1065	936	1185	104	2071	64	-0.01	93	0.05	157	2.84	5.3	-1.2	1.8	A1A2	1.4	1.11	2.12	-0.54	2983	Maximus x Tahiti
250HO14134	Renegade ♦	60	80	734	1076	645	96	1331	67	0.09	95	0.16	162	2.91	2.1	0.5	2.7	A1A2	-0.7	1.85	1.58	0.09	2977	Jaltaoak x Millington
250HO15087	Rozline ♦	40	60	702	931	609	93	487	38	0.09	118	0.38	156	2.73	1.8	-2.0	2.1	A1A2	1.1	1.54	1.36	0.99	2827	Renegade x Frazzled
250HO15156	Captivating	40	60	788	894	1001	106	1359	58	0.06	89	0.14	147	2.84	2.3	-1.4	2.1	A2A2	1.3	1.55	0.94	-0.2	2815	Riveting x Hotline
250HO15364	Halo-PP	40	60	831	907	990	101	641	53	0.13	74	0.19	127	2.67	4.5	-0.7	2.4	A1A2		1.83	2.19	0.10	2855	Limelight-P x Hodedoe
Showcase Progeny Proven																								
7HO15325	Hanans	40	60	635	855	542	92	-1	41	0.16	83	0.33	124	2.73	2.5	-2.8	2.7	A2A2	1.0	3.56	2.54	-0.45	2841	Excalibur x Doc
7HO15634	Cadillac	40	60	355	365	47	96	1083	29	-0.02	52	0.04	81	3.07	0.6	-1.2	2.4	A1A2	1.5	2.61	2.18	1.43	2510	Doc x Kingboy
250HO12961	Doc	35	55	589	585	361	95	1621	56	0.02	66	0.01	122	3.14	3.1	-1.9	2.7	A1A2	-1.7	3.04	2.02	1.32	2767	Kingboy x Mack
250HO14579	Hancock	40	60	515	599	346	96	1282	42	0.01	50	0.00	92	2.82	2.5	-2.2	2.2	A2A2	1.9	3.56	3.34	1.68	2741	Doc x Monterey

♦ NiGen alumni • Early Onset Muscle Weakness, Z-Lame=The lameness evaluation from Zoetis, HHP\$=Herd Health Profit Dollars, SCE=Calving Ease, PL=Productive Life, SCS=Somatic Cell Count Score, DPR=Daughter Pregnancy Rate, SCR=Sire Conception Rate, PTAT=Predicted Transmitting Ability for Type, UDC=Udder Composite, RLS=Rear Leg Side View, GTPI=Total Performance Index, RC=Red Carrier. Prices listed reflect semen cost. An additional fee will be added for insemination service.



CONVERT™ SATISFACTION GUARANTEED!



"Switching to CONVERT for newborn calves has been amazing - fewer scours, smoother transitions, and better health at a fraction of the cost. Highly recommend it!"

Justin Williams, A.I. Technician
Select Sires Member Cooperative



DEFEND AND PROTECT FOR A LIFETIME

Bolster the health of newborn and pre-weaned calves by inoculating the digestive tract and restricting pathogen growth. Green coloring ensures treatment compliance.

Producers Using CONVERT Report

- ✓ Reduced Scours
- ✓ Increased Appetites
- ✓ Increased Growth Rates
- ✓ Reduced Mortality



10% OFF
Jan. 1-Feb. 28, 2025

Convert™ is a trademark of Select Sires Inc. and is manufactured by Agrarian Solutions®. All claims, representation and warranties, expressed or implied, are made only by Agrarian Solutions and not by Select Sires Inc.



IT'S HERE



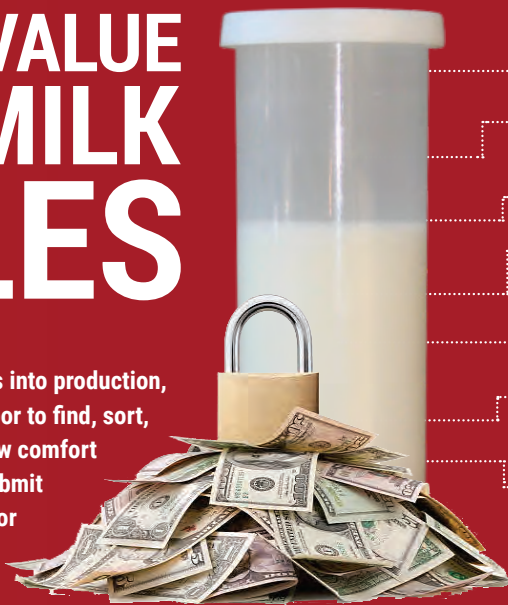
FROM CALF TO COW
LIFETIME MONITORING. MAXIMIZE PERFORMANCE.

CentralStar UNLOCK THE VALUE OF YOUR MILK SAMPLES

SCAN TO LEARN MORE



Testing milk samples to gain insights into production, health, and physiology eliminates labor to find, sort, and lock up cows which enhances cow comfort while saving you time and money. Submit samples through routine DHI testing or directly to a CentralStar lab.



..... PREGNANCY

..... JOHNE'S

..... A1/A2

..... BVD

..... LEUKOSIS

..... NEOSPORA

..... MASTITIS PCR



Now only \$24 each



Call 800.631.3510 or visit www.mycentralstar.com



FerAppease®
Maternal Bovine Appeasing Substance

REDUCE CORTISOL LEVELS AND PREVENT THE NEGATIVE IMPACTS AT THE MOST STRESSFUL TIME IN LIFE..

- ✓ CALVING
- ✓ TRANSITION
- ✓ WEANING
- ✓ DEHORNING
- ✓ HOOF TRIMMING
- ✓ DRY OFF
- ✓ TRANSPORT
- ✓ SHOWING
- ✓ AND MORE!



HOLSTEIN PRICE LIST

December 2024

800.631.3510

www.mycentralstar.com



CentralStar

P.O. Box 191
Waupun, WI 53963

Presorted
Standard Class
U.S. Postage
PAID
Lansing, MI
Permit No. 505

Know someone
searching for a
new career?



Ca3 BIOFRESH

Triple the calcium power without the burn

Three calcium sources ensure steady, sustained release that are safe to the mouth, esophagus, and rumen. Each bolus also delivers 50,000 IU of Vitamin D₃ to boost Ca absorption and metabolism, as well as immune function. Unlike other calcium boluses, Ca3 combines calcium bioavailability and utilization, making it the effective, gentle choice your fresh cows deserve.



Ca3 BIOFRESH

OTHER BOLUSES

Calcium Sources	Calcium acetate	Calcium sulfate	Tricalcium phosphate	Calcium chloride	Calcium carbonate
Speed of absorption	quick	moderate	slow	quick	slow
Ruminal bioavailability	high	high	moderate	high	moderate
Caustic to membranes	low	low	low	high	low

The smarter solution for fresh cows!

®BioFresh is a registered trademark of Agrarian Solutions. All claims, representations, and warranties are made by Agrarian Solutions.

Save \$15 per 48-count box

Offer valid Jan. 1 - Feb. 28, 2025

Not valid on pallet purchases. Pallets ship free.